



Kipling Avenue,

Price £725,000

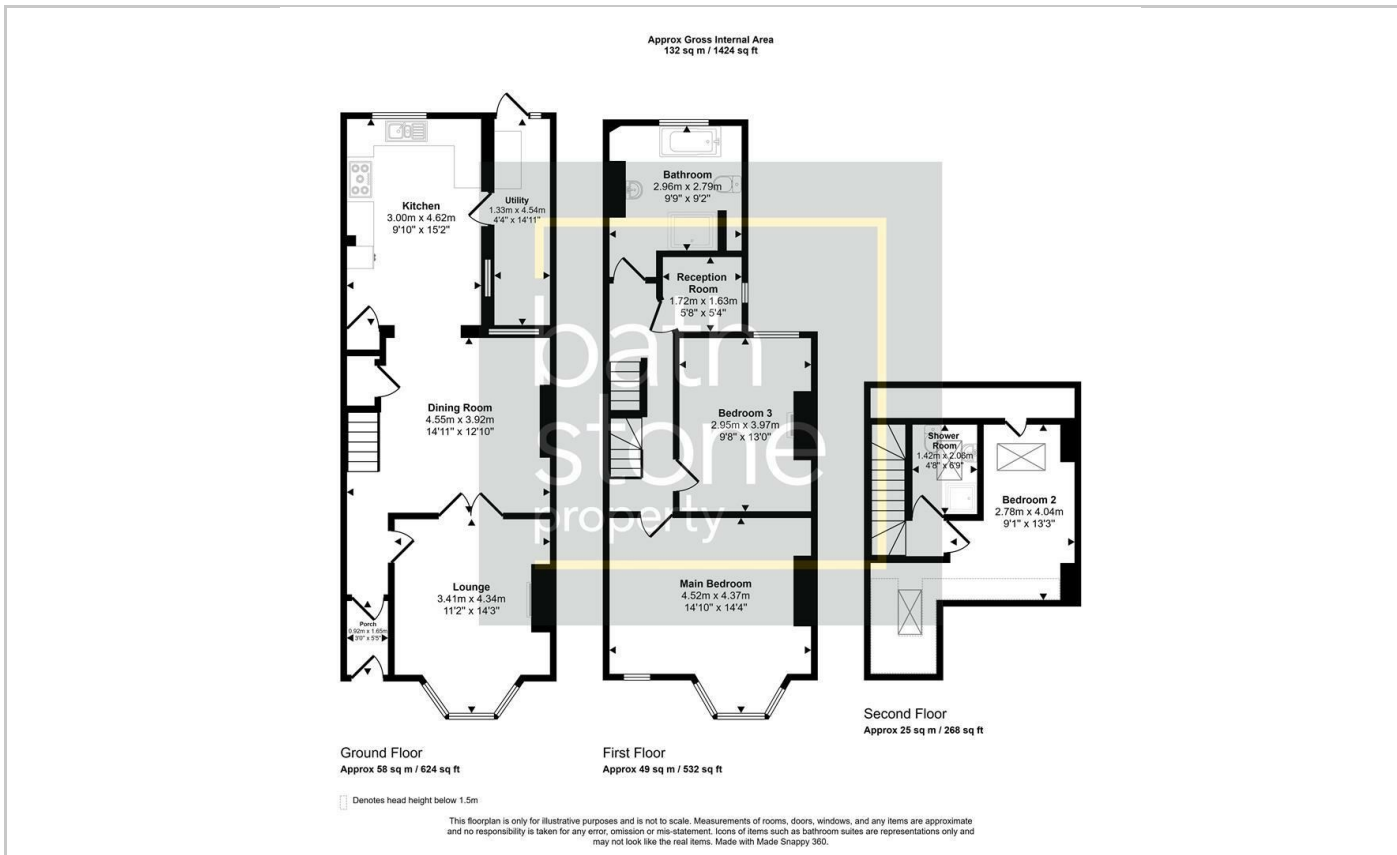
**FOR SALE**



- No Chain
- Edwardian Terrace
- Two Bathrooms
- Easy Maintenance Garden with a Summer House
- Three Bedroom
- Three Reception Rooms
- Utility

## THE PROPERTY

Edwardian mid-terrace is offered with no onward chain, providing beautifully proportioned three-storey refined living space, a low-maintenance garden, and a versatile summer house. Which is set within a desirable location.



Energy Efficiency Rating		Current	Potential
Very energy efficient - lower running costs			
(92 plus) <b>A</b>			
(81-91) <b>B</b>			
(69-80) <b>C</b>			<b>80</b>
(55-68) <b>D</b>		<b>61</b>	
(39-54) <b>E</b>			
(21-38) <b>F</b>			
(1-20) <b>G</b>			
Not energy efficient - higher running costs			
<b>England &amp; Wales</b>		EU Directive 2002/91/EC	